

Ref	IPN	Description
**	219-02010-00	T2000 16W LOOM LOGIC RF
C1	015-24100-08	CAP CER 0805 1N 10% X7R 50V
C2	015-24100-08	CAP CER 0805 1N 10% X7R 50V
C3	015-24100-08	CAP CER 0805 1N 10% X7R 50V
C100	015-23150-01	CAP CER 0805 150P 5% NPO 50V
C101	015-22120-01	CAP CER 0805 12P 5% NPO 50V
C102	015-23150-01	CAP CER 0805 150P 5% NPO 50V
C104	015-06100-08	CAP CER 1206 100N 10% X7R 50V
C105	015-21100-02	CAP 0805 1P0 1% NPO 50V
C106	015-22330-01	CAP CER 0805 33P 5% NPO 50V
#C107	015-21560-02	CAP 0805 5P6 1% NPO 50V
C108	015-23150-01	CAP CER 0805 150P 5% NPO 50V
C110	015-22470-01	CAP CER 0805 47P 5% NPO 50V
C111	015-21560-02	CAP 0805 5P6 1% NPO 50V
#C112	015-21120-02	CAP 0805 1P2 1% NPO 50V
C114	015-22470-01	CAP CER 0805 47P 5% NPO 50V
#C115	015-21820-02	CAP 0805 8P2 0.1 NPO 50V
#C117	015-21120-02	CAP 0805 1P2 1% NPO 50V
C119	015-22470-01	CAP CER 0805 47P 5% NPO 50V
#C121	015-21560-02	CAP 0805 5P6 1% NPO 50V
#C122	015-21560-02	CAP 0805 5P6 1% NPO 50V
C123	015-23150-01	CAP CER 0805 150P 5% NPO 50V
C124	015-21680-02	CAP 0805 6P8 +/-0.1P NPO 50V
C125	015-21330-02	CAP 0805 3P3 +/-0.1P NPO 50V
C126	015-21560-02	CAP 0805 5P6 1% NPO 50V
C127	015-22120-01	CAP CER 0805 12P 5% NPO 50V
C128	015-22330-01	CAP CER 0805 33P 5% NPO 50V
C129	015-25100-08	CAP CER 0805 10N 10% X7R 50V
C130	015-25100-08	CAP CER 0805 10N 10% X7R 50V
C132	015-23150-01	CAP CER 0805 150P 5% NPO 50V
C133	015-22470-01	CAP CER 0805 47P 5% NPO 50V
C134	015-21680-02	CAP 0805 6P8 +/-0.1P NPO 50V
C135	015-22330-01	CAP CER 0805 33P 5% NPO 50V
C136	015-21680-02	CAP 0805 6P8 +/-0.1P NPO 50V
C137	015-23100-01	CAP CER 0805 100P 5% NPO 50V
C138	015-21680-02	CAP 0805 6P8 +/-0.1P NPO 50V
C139	015-22330-01	CAP CER 0805 33P 5% NPO 50V
C140	015-21680-02	CAP 0805 6P8 +/-0.1P NPO 50V
C141	015-22470-01	CAP CER 0805 47P 5% NPO 50V
C142	015-22120-01	CAP CER 0805 12P 5% NPO 50V
C145	015-23100-01	CAP CER 0805 100P 5% NPO 50V
C146	015-24100-08	CAP CER 0805 1N 10% X7R 50V
C147	015-25100-08	CAP CER 0805 10N 10% X7R 50V
C148	015-22100-02	CAP 0805 10P +/-0.1P NPO 50V
C149	015-23150-01	CAP CER 0805 150P 5% NPO 50V
C150	015-23100-01	CAP CER 0805 100P 5% NPO 50V
C151	015-06100-08	CAP CER 1206 100N 10% X7R 50V
C152	015-23100-01	CAP CER 0805 100P 5% NPO 50V
C153	020-57470-10	CAP ELCT AI RDL 4U7 50V LO ESR
C154	015-25100-08	CAP CER 0805 10N 10% X7R 50V
C155	015-23100-01	CAP CER 0805 100P 5% NPO 50V
C156	015-22220-01	CAP CER 0805 22P 5% NPO 50V
C157	015-06100-08	CAP CER 1206 100N 10% X7R 50V
C158	015-24100-08	CAP CER 0805 1N 10% X7R 50V
C174	020-58470-05	CAP ELE AI RDL 47M 16V 6.3X7MM
C175	015-06100-08	CAP CER 1206 100N 10% X7R 50V
C176	015-06100-08	CAP CER 1206 100N 10% X7R 50V
C179	015-25100-08	CAP CER 0805 10N 10% X7R 50V
C180	015-06100-08	CAP CER 1206 100N 10% X7R 50V
C181	015-06100-08	CAP CER 1206 100N 10% X7R 50V
C182	015-23150-01	CAP CER 0805 150P 5% NPO 50V
C184	015-23150-01	CAP CER 0805 150P 5% NPO 50V
C185	015-25100-08	CAP CER 0805 10N 10% X7R 50V
C186	015-25100-08	CAP CER 0805 10N 10% X7R 50V
C187	015-24100-08	CAP CER 0805 1N 10% X7R 50V
C188	015-23100-01	CAP CER 0805 100P 5% NPO 50V
C189	015-23470-08	CAP CER 0805 470P 10% X7R 50V
C190	015-23470-08	CAP CER 0805 470P 10% X7R 50V
C191	015-24100-08	CAP CER 0805 1N 10% X7R 50V
C192	015-22330-01	CAP CER 0805 33P 5% NPO 50V
C193	020-57470-10	CAP ELCT AI RDL 4U7 50V LO ESR
C194	015-23150-01	CAP CER 0805 150P 5% NPO 50V
C195	015-23150-01	CAP CER 0805 150P 5% NPO 50V
C197	015-06100-08	CAP CER 1206 100N 10% X7R 50V
C198	015-23220-01	CAP CER 0805 220P 5% NPO 50V
C199	015-24100-08	CAP CER 0805 1N 10% X7R 50V
C200	015-25100-08	CAP CER 0805 10N 10% X7R 50V
C201	015-06100-08	CAP CER 1206 100N 10% X7R 50V
C202	015-25100-08	CAP CER 0805 10N 10% X7R 50V
C203	015-22560-01	CAP CER 0805 56P 5% NPO 50V
C204	015-25220-08	CAP CER 0805 22N 10% X7R 50V
C205	015-25220-08	CAP CER 0805 22N 10% X7R 50V
C206	015-06100-08	CAP CER 1206 100N 10% X7R 50V
C207	015-25100-08	CAP CER 0805 10N 10% X7R 50V
C208	015-24100-08	CAP CER 0805 1N 10% X7R 50V
C209	015-25100-08	CAP CER 0805 10N 10% X7R 50V
C210	015-25100-08	CAP CER 0805 10N 10% X7R 50V
C211	015-23180-01	CAP CER 0805 180P 5% NPO 50V

Ref	IPN	Description
C212	015-21560-02	CAP 0805 5P6 1% NPO 50V
C213	020-58470-05	CAP ELE AI RDL 47M 16V 6.3X7MM
C214	015-23150-01	CAP CER 0805 150P 5% NPO 50V
C215	020-57470-10	CAP ELCT AI RDL 4U7 50V LO ESR
C216	015-25100-08	CAP CER 0805 10N 10% X7R 50V
C217	020-58470-05	CAP ELE AI RDL 47M 16V 6.3X7MM
C218	020-57470-10	CAP ELCT AI RDL 4U7 50V LO ESR
C219	020-57470-10	CAP ELCT AI RDL 4U7 50V LO ESR
C220	022-55100-10	CAP MYLAR AI 10N 5% 63V POTTED
C221	022-57100-02	CAP MYLAR AI 1M 20% 50V POTTED
C222	022-06100-15	CAP MET POLY100N 5% 50V 5.6 HI
C223	015-23150-01	CAP CER 0805 150P 5% NPO 50V
C224	015-24100-08	CAP CER 0805 1N 10% X7R 50V
C225	015-23270-01	CAP CER 0805 270P 5% NPO 50V
C227	015-22270-01	CAP CER 0805 27P 5% NPO 50V
C228	015-06100-08	CAP CER 1206 100N 10% X7R 50V
C229	020-58470-05	CAP ELE AI RDL 47M 16V 6.3X7MM
C230	015-24470-08	CAP CER 0805 4N7 10% X7R 50V
C231	015-23270-01	CAP CER 0805 270P 5% NPO 50V
C232	015-21470-02	CAP 0805 4P7 1% NPO 50V
C233	020-57470-10	CAP ELCT AI RDL 4U7 50V LO ESR
C234	020-57470-10	CAP ELCT AI RDL 4U7 50V LO ESR
C235	015-06100-08	CAP CER 1206 100N 10% X7R 50V
C236	015-23150-01	CAP CER 0805 150P 5% NPO 50V
C237	015-22270-01	CAP CER 0805 27P 5% NPO 50V
C238	015-22470-01	CAP CER 0805 47P 5% NPO 50V
C239	015-21100-02	CAP 0805 1P0 1% NPO 50V
C240	015-23270-01	CAP CER 0805 270P 5% NPO 50V
C241	015-23270-01	CAP CER 0805 270P 5% NPO 50V
C242	015-25100-08	CAP CER 0805 10N 10% X7R 50V
C243	015-23150-01	CAP CER 0805 150P 5% NPO 50V
C244	015-21560-02	CAP 0805 5P6 1% NPO 50V
C245	015-21270-02	CAP 0805 2P7 +/-0.1P NPO 50V
C246	015-23150-01	CAP CER 0805 150P 5% NPO 50V
C247	015-21820-02	CAP 0805 8P2 0.1 NPO 50V
C249	015-23270-01	CAP CER 0805 270P 5% NPO 50V
C250	015-22820-01	CAP CER 0805 82P 5% NPO 50V
C251	015-23100-01	CAP CER 0805 100P 5% NPO 50V
C252	015-23180-01	CAP CER 0805 180P 5% NPO 50V
C253	015-22820-01	CAP CER 0805 82P 5% NPO 50V
C257	015-22180-01	CAP CER 0805 18P 5% NPO 50V
C300	015-03150-06	CAP CER 1210 150P NPO500VGRM42
#C301	015-23270-01	CAP CER 0805 270P 5% NPO 50V
#C302	015-21820-02	CAP 0805 8P2 0.1 NPO 50V
#C303	015-02150-06	CAP CER 1210 15P NPO500VGRM42
C304	015-24100-08	CAP CER 0805 1N 10% X7R 50V
#C305	015-22150-01	CAP CER 0805 15P 5% NPO 50V
#C306	015-22270-01	CAP CER 0805 27P 5% NPO 50V
#C308	015-22470-01	CAP CER 0805 47P 5% NPO 50V
#C309	015-22560-01	CAP CER 0805 56P 5% NPO 50V
C307	015-06100-08	CAP CER 1206 100N 10% X7R 50V
C310	015-24100-08	CAP CER 0805 1N 10% X7R 50V
C311	015-23150-01	CAP CER 0805 150P 5% NPO 50V
C312	015-23150-01	CAP CER 0805 150P 5% NPO 50V
#C313	015-21560-02	CAP 0805 5P6 1% NPO 50V
#C314	015-21470-02	CAP 0805 4P7 1% NPO 50V
C315	015-23150-01	CAP CER 0805 150P 5% NPO 50V
C316	015-23150-01	CAP CER 0805 150P 5% NPO 50V
C317	015-23150-01	CAP CER 0805 150P 5% NPO 50V
C318	015-23150-01	CAP CER 0805 150P 5% NPO 50V
C319	015-03150-06	CAP CER 1210 150P NPO500VGRM42
C320	015-02330-03	CAP CER 33P 5% 500V HIQ GRM111
C321	015-02330-03	CAP CER 33P 5% 500V HIQ GRM111
#C323	015-02270-03	CAP CER 27P 5% 500V HIQ GRM111
C324	015-02330-03	CAP CER 33P 5% 500V HIQ GRM111
C325	015-02330-03	CAP CER 33P 5% 500V HIQ GRM111
C326	015-03150-06	CAP CER 1210 150P NPO500VGRM42
C327	015-02470-03	CAP CER 47P 5% 500V HIQ GRM111
C328	020-07470-04	CAP ELECT RAD 4M7 25V 20%8*13
C329	015-02470-03	CAP CER 47P 5% 500V HIQ GRM111
#C330	015-01820-06	CAP CER 1210 8P2 NPO500VGRM42
#C331	015-01820-06	CAP CER 1210 8P2 NPO500VGRM42
C332	015-03150-06	CAP CER 1210 150P NPO500VGRM42
C333	015-23150-01	CAP CER 0805 150P 5% NPO 50V
C334	015-23150-01	CAP CER 0805 150P 5% NPO 50V
C335	015-01270-06	CAP CER 1210 2P7 NPO200V GRM42
C336	015-03150-06	CAP CER 1210 150P NPO500VGRM42
C337	015-23150-01	CAP CER 0805 150P 5% NPO 50V
C339	015-01560-06	CAP CER 1210 5P6 NPO500VGRM42
C340	015-01560-06	CAP CER 1210 5P6 NPO500VGRM42
C341	015-01560-06	CAP CER 1210 5P6 NPO500VGRM42
C342	015-01470-06	CAP CER 1210 4P7 NPO500VGRM42
C343	015-01560-06	CAP CER 1210 5P6 NPO500VGRM42
C344	015-01390-06	CAP CER 1210 3P9 NPO500VGRM42
C345	015-23150-01	CAP CER 0805 150P 5% NPO 50V
C346	015-21220-02	CAP 0805 2P2 +/-0.1P NPO 50V
C347	015-21220-02	CAP 0805 2P2 +/-0.1P NPO 50V
C348	015-23150-01	CAP CER 0805 150P 5% NPO 50V

Ref	IPN	Description
C349	015-23150-01	CAP CER 0805 150P 5% NPO 50V
C350	015-21470-02	CAP 0805 4P7 1% NPO 50V
C351	015-06100-08	CAP CER 1206 100N 10% X7R 50V
C352	015-21150-01	CAP CER 0805 1P5+0.25 NPO 50V
C353	015-24100-08	CAP CER 0805 1N 10% X7R 50V
C360	015-23150-01	CAP CER 0805 150P 5% NPO 50V
C361	015-21330-02	CAP 0805 3P3 +/-0.1P NPO 50V
C403	015-23470-08	CAP CER 0805 470P 10% X7R 50V
C410	020-57470-10	CAP ELCT AI RDL 4U7 50V LO ESR
C411	015-06100-08	CAP CER 1206 100N 10% X7R 50V
C412	020-58470-05	CAP ELE AI RDL 47M 16V 6.3X7MM
C413	015-06100-08	CAP CER 1206 100N 10% X7R 50V
C414	020-09470-05	CAP ELE RAD 470M 16V 10X12.5MM
C415	020-19100-02	CAP ELE RA 1000M 16V 12X20MM
C416	015-23470-08	CAP CER 0805 470P 10% X7R 50V
C417	015-24100-08	CAP CER 0805 1N 10% X7R 50V
C419	015-06100-08	CAP CER 1206 100N 10% X7R 50V
C420	015-06100-08	CAP CER 1206 100N 10% X7R 50V
C423	020-08560-09	CAP ELECT RAD 56M 50V 6.3*15.5
C424	020-57470-10	CAP ELCT AI RDL 4U7 50V LO ESR
C425	020-57470-10	CAP ELCT AI RDL 4U7 50V LO ESR
C426	015-25100-08	CAP CER 0805 10N 10% X7R 50V
C427	020-57470-10	CAP ELCT AI RDL 4U7 50V LO ESR
C428	020-57470-10	CAP ELCT AI RDL 4U7 50V LO ESR
C429	015-24100-08	CAP CER 0805 1N 10% X7R 50V
C430	020-08560-09	CAP ELECT RAD 56M 50V 6.3*15.5
C431	015-06100-08	CAP CER 1206 100N 10% X7R 50V
C453	015-06100-08	CAP CER 1206 100N 10% X7R 50V
C454	015-24100-08	CAP CER 0805 1N 10% X7R 50V
C455	015-23150-01	CAP CER 0805 150P 5% NPO 50V
C152A	015-25100-08	CAP CER 0805 10N 10% X7R 50V
C153A	015-23100-01	CAP CER 0805 100P 5% NPO 50V
D1	001-00012-90	DIODE MR2520L O-VOLT SUPP
D100	001-10000-99	DIODE SMD BAV99 D-SW SOT23
D101	001-10043-90	DIODE SMD BB439 VCAP SOD323
D102	001-10043-90	DIODE SMD BB439 VCAP SOD323
D103	001-10043-90	DIODE SMD BB439 VCAP SOD323
D105	001-10000-18	DIODE SMD BAT18 S-SW SOT23
D106	001-10000-18	DIODE SMD BAT18 S-SW SOT23

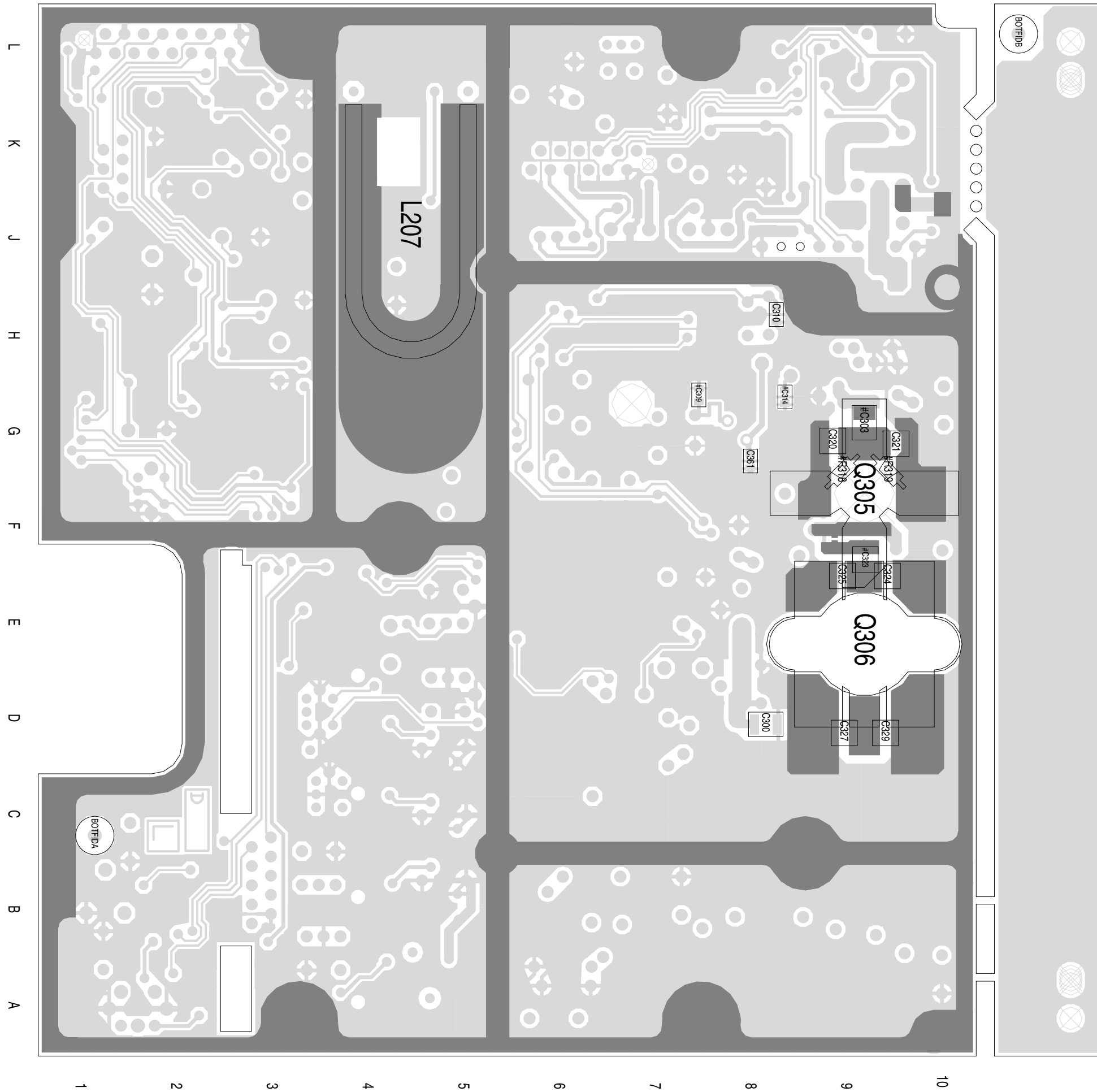
Ref	IPN	Description
L208	056-10330-00	IND FXD SMD 330NH 3.2*2.5*1.6
L209	056-10330-00	IND FXD SMD 330NH 3.2*2.5*1.6
L210	056-10047-00	IND FXD SMD 47NH 3.2*2.5*1.6
L211	056-10330-00	IND FXD SMD 330NH 3.2*2.5*1.6
L212	056-10033-00	IND FXD SMD 33NH 3.2*2.5*1.6
L302	052-08130-15	COIL A/W 1.5T/3.0MM HOR 0.8MM
#L300	052-08635-10	COIL SHT A/W 1T/3.5MM SMD0.8MM
#L301	052-08140-15	COIL A/W 1.5T/4.0MM HOR 0.8MM
L303	056-00021-60	IND FXD 330NH AX N/MAG 6.6*2.7
L304	030-50000-00	LINK WIRE AI ZERO OHM 0.6
L306	057-10005-03	IND 0805 EMI SUP 5E@100MHZ 0.5
#L305	052-08130-25	COIL A/W 2.5T/3.0MM HOR 0.8MM
#L307	052-08125-15	COIL A/W 1.5T/2.5MM HOR 0.8MM
L308	052-08130-65	COIL A/W 6.5T/3.0MM HOR 0.8MM
L308A	030-50000-00	LINK WIRE AI ZERO OHM 0.6
L309	030-50000-00	LINK WIRE AI ZERO OHM 0.6
L310	052-08130-65	COIL A/W 6.5T/3.0MM HOR 0.8MM
L311	052-08130-65	COIL A/W 6.5T/3.0MM HOR 0.8MM
L312	056-00021-60	IND FXD 330NH AX N/MAG 6.6*2.7
L313	052-08150-55	COIL A/W 5.5T/5.0MM HOR 0.8MM
L314	030-50000-00	LINK WIRE AI ZERO OHM 0.6
L316	052-08130-65	COIL A/W 6.5T/3.0MM HOR 0.8MM
L316A	030-50000-00	LINK WIRE AI ZERO OHM 0.6
L317	051-00005-28	COIL#528 HAIRPIN 17MM T550A
L318	052-08130-15	COIL A/W 1.5T/3.0MM HOR 0.8MM
L319	056-00021-04	IND FXD 330NH AXIAL (uH33)
L320	052-08135-35	COIL A/W 3.5T/3.5MM HOR 0.8MM
#L321	052-08620-10	COIL SHT A/W 1T/2.0MM SMD0.8MM
L322	052-08135-25	COIL A/W 2.5T/3.5MM HOR 0.8MM
L323	052-08135-25	COIL A/W 2.5T/3.5MM HOR 0.8MM
L324	052-08130-35	COIL A/W 3.5T/3.0MM HOR 0.8MM
L325	052-08135-25	COIL A/W 2.5T/3.5MM HOR 0.8MM
L326	052-08135-25	COIL A/W 2.5T/3.5MM HOR 0.8MM
L331	057-10005-03	IND 0805 EMI SUP 5E@100MHZ 0.5
L401	050-00016-50	COIL TAIT NO 650 455KHZ
P2	219-02005-00	T2000 12W LOOM LOGIC RF LONG
P3	240-00026-21	PLUG CAP HOUSING 7-POS
P5	240-00010-76	PLUG HEADER 10W M-MATCH PCB
P6	240-00010-76	PLUG HEADER 10W M-MATCH PCB
P7	240-00020-72	HEADER 2W PCB MG ULTRES
Q100	000-10003-12	XSTR SMD BFR31 N JFET SOT23
Q101	000-10095-10	XSTR SMD BR951 NPN UHF
Q102	000-10008-57	XSTR SMD BC857 PNP SOT23 SS
Q103	000-10095-10	XSTR SMD BR951 NPN UHF
Q105	000-10095-10	XSTR SMD BR951 NPN UHF
Q106	000-10008-47	XSTR BC847B NPN SOT23
Q107	000-10008-92	XSTR SMD BFS17 NPN SOT23
Q108	000-10008-92	XSTR SMD BFS17 NPN SOT23
Q109	000-10008-24	XSTR SMD BF824 PNP SOT23 SS
Q110	000-10008-92	XSTR SMD BFS17 NPN SOT23
Q115	000-10008-47	XSTR BC847B NPN SOT23
Q201	000-10008-57	XSTR SMD BC857 PNP SOT23 SS
Q202	000-10008-47	XSTR BC847B NPN SOT23
Q203	000-10008-47	XSTR BC847B NPN SOT23
Q204	000-10008-47	XSTR BC847B NPN SOT23
Q205	000-10008-57	XSTR SMD BC857 PNP SOT23 SS
Q206	000-10008-47	XSTR BC847B NPN SOT23
Q207	000-10008-57	XSTR SMD BC857 PNP SOT23 SS
Q208	000-10008-47	XSTR BC847B NPN SOT23
Q209	000-10008-57	XSTR SMD BC857 PNP SOT23 SS
Q210	000-10003-12	XSTR SMD BFR31 N JFET SOT23
Q211	000-10008-07	XSTR SMD BC807 PNP SOT23 AF
Q212	000-10095-10	XSTR SMD BR951 NPN UHF
Q213	000-10008-47	XSTR BC847B NPN SOT23
Q214	000-10057-10	XSTR SMD BR571 NPN SOT23
Q215	000-10057-10	XSTR SMD BR571 NPN SOT23
Q300	000-10095-10	XSTR SMD BR951 NPN UHF
Q301	000-00032-47	XSTR MRF559 NPN XPACK 0.5W
Q302	000-00032-56	XSTR MRF630 NPN T039 UHF 3W
Q303	000-10008-47	XSTR BC847B NPN SOT23
Q304	000-00012-15	XSTR BD234 PNP AF PWR TO126
Q305	000-00022-75	XSTR SD1433 NPN S-MTG 10W
Q306	000-00032-65	XSTR MRF646 NPN 6FLF UHF45W
Q401	000-10008-57	XSTR SMD BC857 PNP SOT23 SS
Q402	000-10008-17	XSTR SMD BC817-25 NPN SOT23
Q403	000-10008-47	XSTR BC847B NPN SOT23
Q404	000-10008-07	XSTR SMD BC807 PNP SOT23 AF
Q405	000-10008-07	XSTR SMD BC807 PNP SOT23 AF
R100	036-13330-00	RES M/F 0805 330E 5%
R101	036-14390-00	RES M/F 0805 3K9 5%
R102	036-13560-00	RES M/F 0805 560E 5%
R103	036-14220-00	RES M/F 0805 2K2 5%
R104	036-13120-00	RES M/F 0805 120E 5%
R105	036-12180-00	RES M/F 0805 18E 5%
R106	036-16100-00	RES M/F 0805 100K 5%

Ref	IPN	Description
R107	036-16100-00	RES M/F 0805 100K 5%
R108	036-16100-00	RES M/F 0805 100K 5%
R112	036-12470-00	RES M/F 0805 47E 5%
R113	036-11470-00	RES M/F 0805 4E7 5%
R114	036-13820-00	RES M/F 0805 820E 5%
R115	036-15120-00	RES M/F 0805 12K 5%
R116	036-11470-00	RES M/F 0805 4E7 5%
R117	036-12100-00	RES M/F 0805 10E 5%
R118	036-13100-00	RES M/F 0805 100E 5%
R119	036-12100-00	RES M/F 0805 10E 5%
R120	036-13820-00	RES M/F 0805 820E 5%
R121	036-13180-00	RES M/F 0805 180E 5%
R122	036-15100-00	RES M/F 0805 10K 5%
R123	036-15100-00	RES M/F 0805 10K 5%
R131	036-13100-00	RES M/F 0805 100E 5%
R132	036-14220-00	RES M/F 0805 2K2 5%
R133	036-13270-00	RES M/F 0805 270E 5%
R135	036-15100-00	RES M/F 0805 10K 5%
R138	036-16100-00	RES M/F 0805 100K 5%
R140	036-15680-00	RES M/F 0805 68K 5%
R141	036-14150-00	RES M/F 0805 1K5 5%
R142	036-15270-00	RES M/F 0805 27K 5%
R143	036-15330-00	RES M/F 0805 33K 5%
R144	036-15680-00	RES M/F 0805 68K 5%
R145	036-14150-00	RES M/F 0805 1K5 5%
R146	036-12220-00	RES M/F 0805 22E 5%
R147	036-13220-00	RES M/F 0805 220E 5%
R148	036-13560-00	RES M/F 0805 560E 5%
R149	036-16100-00	RES M/F 0805 100K 5%
R150	036-16100-00	RES M/F 0805 100K 5%
R151	036-14330-00	RES M/F 0805 3K3 5%
R152	036-16390-00	RES M/F 0805 390K 5%
R153	036-14100-00	RES M/F 0805 1K 5%
R155	036-16100-00	RES M/F 0805 100K 5%
R156	036-13100-00	RES M/F 0805 100E 5%
R157	036-15100-00	RES M/F 0805 10K 5%
R158	036-14100-00	RES M/F 0805 1K 5%
R159	036-12470-00	RES M/F 0805 47E 5%
R160	036-12100-00	RES M/F 0805 10E 5%
R161	036-14100-00	RES M/F 0805 1K 5%
R194	036-10000-00	RES M/F 0805 ZERO OHM
R195	036-15680-00	RES M/F 0805 68K 5%
R196	036-13100-00	RES M/F 0805 100E 5%
R197	036-13100-00	RES M/F 0805 100E 5%
R198	036-14220-00	RES M/F 0805 2K2 5%
R199	036-13100-00	RES M/F 0805 100E 5%
R213	036-13330-00	RES M/F 0805 330E 5%
R214	036-14120-00	RES M/F 0805 1K2 5%
R217	036-12470-00	RES M/F 0805 47E 5%
R218	036-15120-00	RES M/F 0805 12K 5%
R219	036-13270-00	RES M/F 0805 270E 5%
R220	036-14680-00	RES M/F 0805 68K 5%
R221	036-13330-00	RES M/F 0805 330E 5%
R222	036-12470-00	RES M/F 0805 47E 5%
R223	036-15220-00	RES M/F 0805 22K 5%
R224	036-15330-00	RES M/F 0805 33K 5%
R225	036-15220-00	RES M/F 0805 22K 5%
R226	036-15150-00	RES M/F 0805 15K 5%
R227	036-13560-00	RES M/F 0805 560E 5%
R228	036-14330-00	RES M/F 0805 3K3 5%
R229	036-12220-00	RES M/F 0805 22E 5%
R230	036-13390-00	RES M/F 0805 390E 5%
R231	036-13180-00	RES M/F 0805 180E 5%
R232	036-14220-00	RES M/F 0805 2K2 5%
R233	036-17100-00	RES M/F 0805 1M 5%
R234	036-13180-00	RES M/F 0805 180E 5%
R235	036-13330-00	RES M/F 0805 330E 5%
R236	036-12470-00	RES M/F 0805 47E 5%
R237	036-13100-00	RES M/F 0805 100E 5%
R238	036-14820-00	RES M/F 0805 8K2 5%
R239	036-15220-00	RES M/F 0805 22K 5%
R240	036-16100-00	RES M/F 0805 100K 5%
R241	036-14150-00	RES M/F 0805 1K5 5%
R242	036-12220-00	RES M/F 0805 22E 5%
R243	036-14220-00	RES M/F 0805 2K2 5%
R244	036-12220-00	RES M/F 0805 22E 5%
R245	036-13100-00	RES M/F 0805 100E 5%
R246	036-15150-00	RES M/F 0805 15K 5%
R247	036-12100-00	RES M/F 0805 10E 5%
R248	036-10000-00	RES M/F 0805 ZERO OHM
R250	036-14220-00	RES M/F 0805 2K2 5%
R251	036-13150-00	RES M/F 0805 150E 5%
R252	036-13820-00	RES M/F 0805 820E 5%
R253	036-12470-00	RES M/F 0805 47E 5%
R254	036-12330-00	RES M/F 0805 33E 5%
R255	036-12220-00	RES M/F 0805 22E 5%
R256	036-14150-00	RES M/F 0805 1K5 5%
R257	036-14120-00	RES M/F 0805 1K2 5%

Ref	IPN	Description
R258	036-12100-00	RES M/F 0805 10E 5%
R259	036-13390-00	RES M/F 0805 390E 5%
R260	036-12180-00	RES M/F 0805 18E 5%
R261	036-12330-00	RES M/F 0805 33E 5%
R262	036-12100-00	RES M/F 0805 10E 5%
R266	036-14330-00	RES M/F 0805 3K3 5%
R267	036-14330-00	RES M/F 0805 3K3 5%
R268	036-12560-00	RES M/F 0805 56E 5%
R269	036-11470-00	RES M/F 0805 4E7 5%
R270	036-11470-00	RES M/F 0805 4E7 5%
R271	036-13220-00	RES M/F 0805 220E 5%
R272	036-13220-00	RES M/F 0805 220E 5%
R273	036-11470-00	RES M/F 0805 4E7 5%
R274	036-14390-00	RES M/F 0805 3K9 5%
R275	036-11470-00	RES M/F 0805 4E7 5%
R276	036-14680-00	RES M/F 0805 68K 5%
R277	036-12330-00	RES M/F 0805 33E 5%
R278	036-16100-00	RES M/F 0805 100K 5%
R282	036-13120-00	RES M/F 0805 120E 5%
R284	036-15100-00	RES M/F 0805 10K 5%
R285	036-15100-00	RES M/F 0805 10K 5%
R286	036-14100-00	RES M/F 0805 1K 5%
R287	036-16100-00	RES M/F 0805 100K 5%
R288	036-15390-00	RES M/F 0805 39K 5%
R301	036-13220-00	RES M/F 0805 220E 5%
R302	036-14100-00	RES M/F 0805 1K 5%
R303	030-53270-20	RES FILM AI 270E 5% 0.5W 7x2.5
R304	036-13100-00	RES M/F 0805 100E 5%
R305	036-12100-00	RES M/F 0805 10E 5%
R307	030-03220-00	RES FILM 220E 5% 0.25W 7X2.5
R308	030-54120-20	RES FILM AI 1K2 5% 0.4W 4X1.6
R309	036-12680-00	RES M/F 0805 68E 5%
R310	030-53180-20	RES FILM AI 180E 5% 0.4W 4X1.6
R311	036-13180-00	RES M/F 0805 180E 5%
R312	036-13680-00	RES M/F 0805 680E 5%
R314	030-03470-00	RES FILM 470E 5% 0.25W 7X2.5
R315	030-52220-20	RES FILM AI 22E 5% 0.4W 4X1.6
R316	036-13150-00	RES M/F 0805 150E 5%
R317	030-53470-20	RES FILM AI 470E 5% 0.4W 4X1.6
R318	030-52470-20	RES FILM AI 47E 5% 0.4W 4X1.6
R319	030-52470-20	RES FILM AI 47E 5% 0.4W 4X1.6
R320	030-55270-20	RES FILM AI 27K 5% 0.4W 4X1.6
R321	036-16470-00	RES M/F 0805 470K 5%
R322	030-02100-00	RES FILM 10E 5% 0.25W 7X2.5
R325	030-55270-20	RES FILM AI 27K 5% 0.4W 4X1.6
R326	036-16220-00	RES M/F 0805 220K 5%
R327	036-14100-00	RES M/F 0805 1K 5%
R328	030-53150-20	RES FILM AI 150E 5% 0.4W 4X1.6
R329	036-15470-00	RES M/F 0805 47K 5%
R330	036-16220-00	RES M/F 0805 220K 5%
R332	036-13100-00	RES M/F 0805 100E 5%
R333	036-14220-00	RES M/F 0805 2K2 5%
R337	036-10000-00	RES M/F 0805 ZERO OHM
R418	036-13680-00	RES M/F 0805 680E 5%
R420	036-15330-00	RES M/F 0805 33K 5%
R421	036-15330-00	RES M/F 0805 33K 5%
R422	036-12220-00	RES M/F 0805 22E 5%
R425	036-14100-00	RES M/F 0805 1K 5%
R426	036-11470-00	RES M/F 0805 4E7 5%
R427	036-11470-00	RES M/F 0805 4E7 5%
R428	036-12220-00	RES M/F 0805 22E 5%
R429	036-15270-00	RES M/F 0805 27K 5%
R430	036-14680-00	RES M/F 0805 68K 5%
R431	036-16100-00	RES M/F 0805 100K 5%
R432	036-12100-00	RES M/F 0

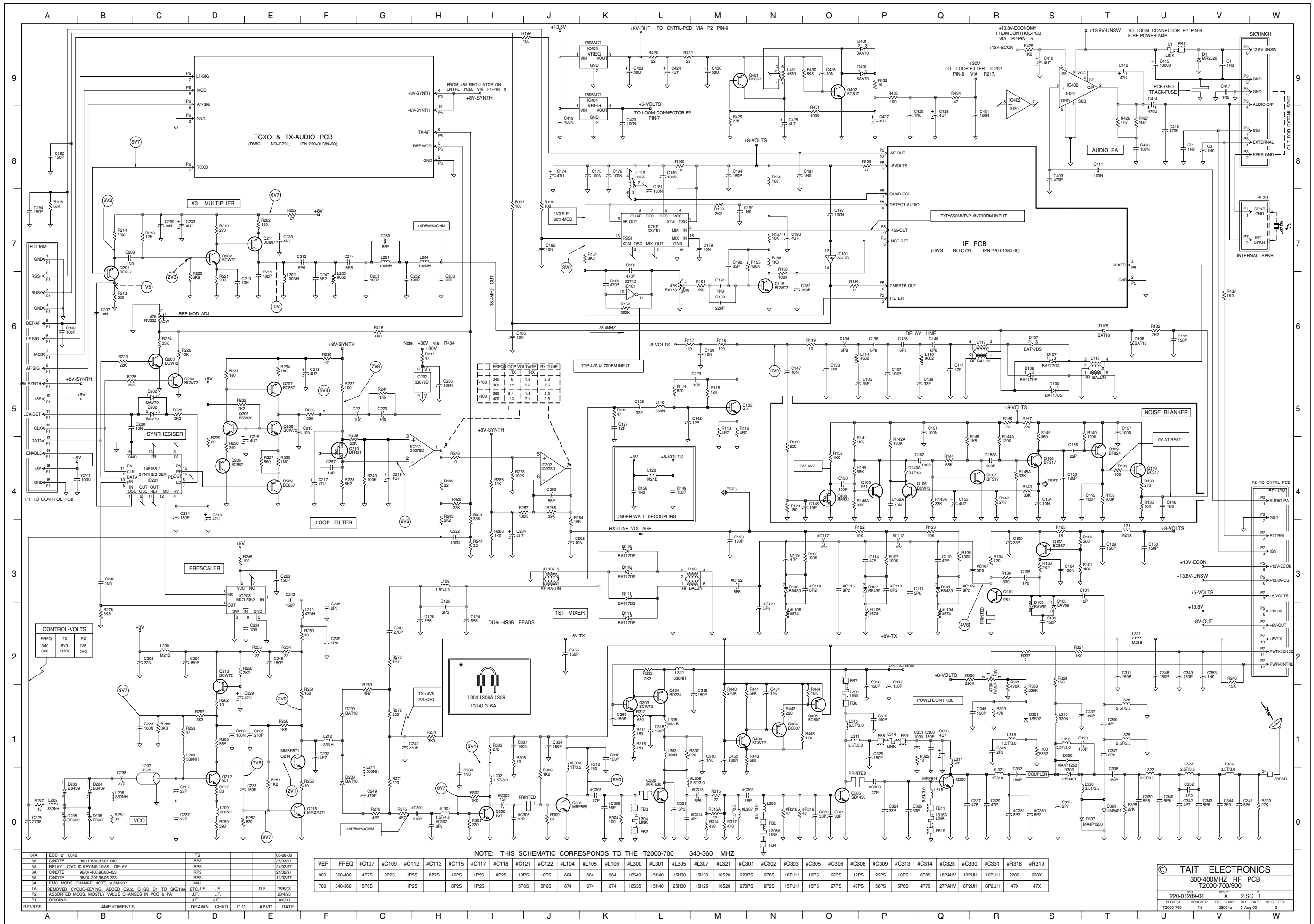
Grid Reference Index

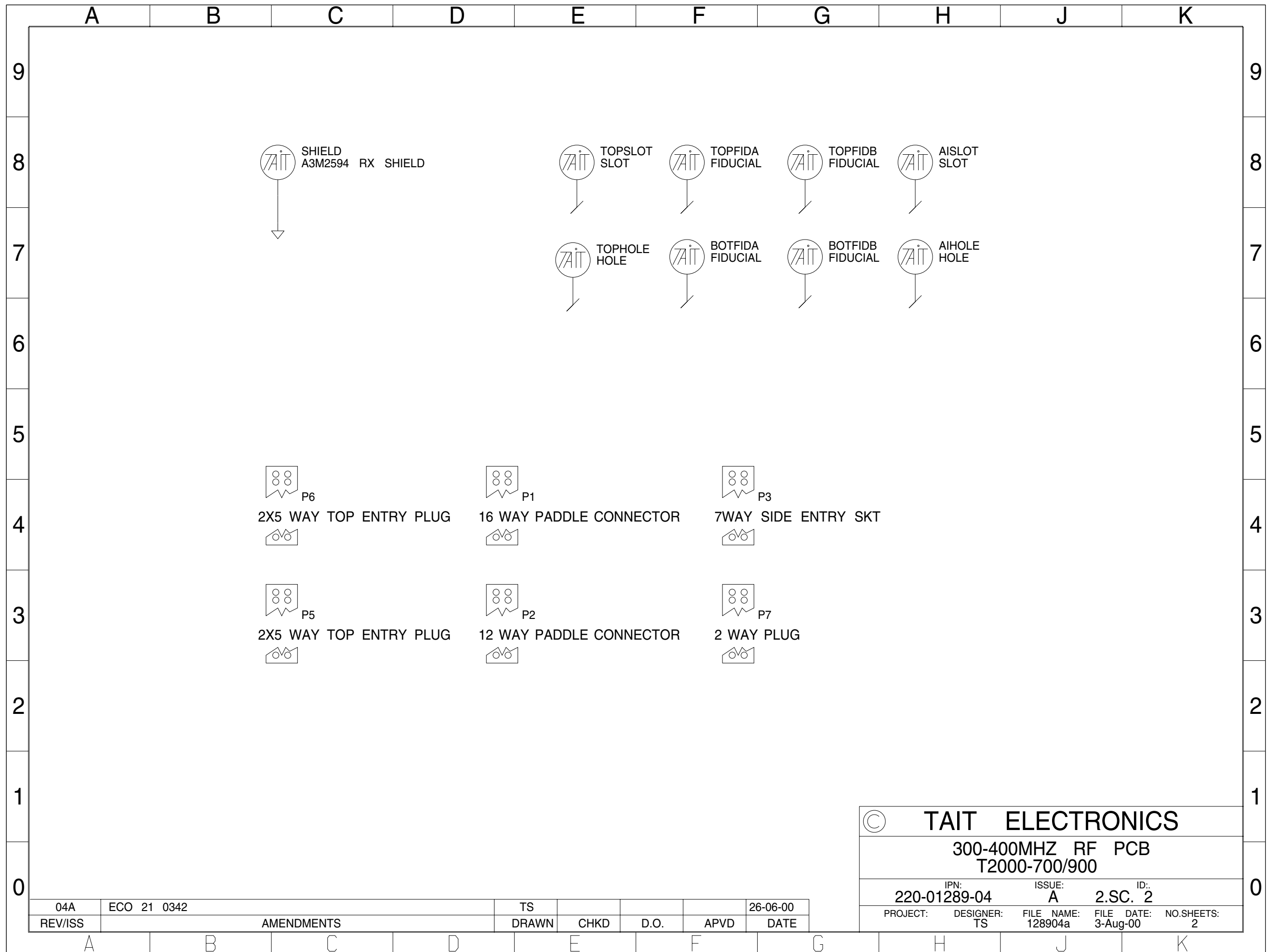
Device	PCB	Circuit	Device	PCB	Circuit	Device	PCB	Circuit	Device	PCB	Circuit	Device	PCB	Circuit	Device	PCB	Circuit	Device	PCB	Circuit
C1	1:J10	1-V9	C208	1:H2	1-B7	C345	1:D8	1-R1	IC402	1:J10	1-S8	Q207	1:J3	1-E5	R223	1:H3	1-B5	R418	1:J3	1-G6
C2	1:L10	1-U8	C209	1:G3	1-C7	C346	1:D8	1-R1	IC402	1:J10	1-R9	Q208	1:J3	1-E5	R224	1:H3	1-C6	R420	1:J4	1-H4
C3	1:L10	1-V8	C210	1:H2	1-D6	C347	1:A7	1-T1	IC403	1:J8	1-K9	Q209	1:H3	1-E4	R225	1:G3	1-B5	R421	1:J4	1-I3
C100	1:A5	1-U3	C211	1:F2	1-E6	C348	1:J7	1-U2	IC404	1:J8	1-K8	Q210	1:K3	1-F4	R226	1:H2	1-C5	R422	1:K8	1-L9
C101	1:A6	1-T3	C212	1:G2	1-F7	C349	1:J7	1-U2				Q211	1:G2	1-E7	R227	1:J3	1-E4	R425	1:L10	1-S9
C102	1:A6	1-S2	C213	1:H4	1-D4	C350	1:A7	1-T1	L1	1:K10	1-U9	Q212	1:K6	1-D0	R228	1:G3	1-C5	R426	1:L9	1-T8
C104	1:A6	1-S3	C214	1:G4	1-C4	C351	1:D9	1-Q1	#L104	1:B6	1-Q2	Q213	1:H5	1-D1	R229	1:H4	1-D4	R427	1:L9	1-T8
C105	1:A6	1-S3	C215	1:J4	1-E4	C352	1:B10	1-U0	#L105	1:C6	1-P2	Q214	1:H6	1-F1	R230	1:J4	1-D4	R428	1:K8	1-L9
C106	1:B6	1-R3	C216	1:J3	1-E5	C353	1:K7	1-V2	#L106	1:D6	1-N2	Q215	1:J6	1-F0	R231	1:H4	1-D5	R429	1:K7	1-M8
#C107	1:B6	1-R3	C217	1:L4	1-F4	C360	1:K7	1-K1	L107	1:E6	1-J3	Q300	1:G7	1-I0	R232	1:J4	1-D5	R430	1:L7	1-O9
C108	1:A5	1-T3	C218	1:H4	1-F5	C361	2:G9	1-L0	L108	1:D6	1-L3	Q301	1:G8	1-J0	R233	1:J3	1-E4	R431	1:K7	1-O8
#C109	1:B5	1-Q3	C219	1:K3	1-G4	C403	1:J10	1-S8	L109	1:F6	1-H3	Q302	1:G9	1-L0	R234	1:H3	1-E5	R432	1:L7	1-P9
C110	1:B5	1-Q3	C220	1:K4	1-G5	C410	1:L10	1-S9	L110	1:E5	1-L5	Q303	1:J7	1-K1	R235	1:J3	1-F5	R433	1:K7	1-P9
C111	1:B6	1-P3	C221	1:K4	1-G5	C411	1:J9	1-T8	L114	1:D4	1-P5	Q304	1:J7	1-L1	R236	1:K4	1-F5	R434	1:J7	1-Q9
#C112	1:C5	1-P3	C222	1:K4	1-H3	C412	1:L9	1-T9	L116	1:C5	1-Q5	Q305	2:F10	1-O0	R237	1:K3	1-F5	R437	1:L10	1-V6
#C113	1:C5	1-P3	C223	1:G4	1-E3	C413	1:L9	1-T8	L117	1:B4	1-R5	Q306	2:E10	1-Q0	R238	1:K4	1-F4	R440	1:H7	1-M1
C114	1:C5	1-P3	C224	1:G4	1-E2	C414	1:K9	1-U9	L118	1:B4	1-T5	Q401	1:L8	1-M9	R239	1:K3	1-F4	R441	1:H8	1-N1
#C115	1:C6	1-O3	C225	1:J4	1-A0	C415	1:K9	1-U9	L119	1:A3	1-L8	Q402	1:L7	1-O9	R240	1:K3	1-G4	R442	1:H8	1-N1
#C117	1:C5	1-O3	C227	1:K6	1-C0	C416	1:J10	1-U8	L120	1:F4	1-L4	Q403	1:H8	1-N1	R241	1:K4	1-G5	R443	1:H8	1-N1
#C118	1:D5	1-O3	C228	1:L5	1-D1	C417	1:K10	1-V9	L121	1:A5	1-T3	Q404	1:H8	1-N1	R242	1:J4	1-H4	R444	1:H7	1-O1
C119	1:D5	1-N3	C229	1:J5	1-D1	C419	1:J8	1-J8	L200	1:H5	1-C2	Q405	1:H7	1-O1	R243	1:J4	1-H3	R445	1:H8	1-O1
#C121	1:C6	1-N2	C230	1:G2	1-E7	C420	1:J9	1-K8	L201	1:G3	1-G7				R244	1:K4	1-I3			
#C122	1:D5	1-M3	C231	1:J6	1-E1	C423	1:K9	1-K9	L202	1:F2	1-E6	R100	1:A6	1-R3	R245	1:H4	1-D3	RV153	1:B2	1-L6
C123	1:D5	1-M3	C232	1:H6	1-F1	C424	1:K8	1-L9	L203	1:F3	1-F6	R101	1:A5	1-S3	R246	1:K7	1-V2	RV222	1:J3	1-C6
C124	1:F6	1-H2	C233	1:G3	1-C7	C425	1:K7	1-N8	L204	1:F3	1-H7	R102	1:A5	1-S3	R247	1:K4	1-A0	RV324	1:E8	1-R2
C125	1:F6	1-H2	C234	1:K3	1-I3	C426	1:L7	1-O9	L205	1:K5	1-A0	R103	1:A6	1-S3	R248	1:L4	1-H4			
C126	1:G6	1-H2	C235	1:L5	1-C1	C427	1:L7	1-P8	L206	1:K5	1-B0	R104	1:B6	1-R3	R250	1:J5	1-D2	S4	1:B10	1-W0
C127	1:E5	1-K5	C236	1:J6	1-D0	C428	1:L7	1-Q8	L207	2:K5	1-C0	R105	1:A5	1-S3	R251	1:H5	1-F1	SHIELD	1:C5	2-C8
C128	1:E5	1-L5	C237	1:K6	1-C0	C429	1:J7	1-P8	L208	1:L6	1-C1	R106	1:B5	1-Q3	R252	1:J6	1-D0	TSP5	1:E4	1-M4
C129	1:E5	1-M5	C238	1:K5	1-B0	C430	1:L8	1-M9	L209	1:K6	1-D0	R107	1:C5	1-P3	R253	1:L6	1-C1	TSP7	1:E8	1-S4
C130	1:E4	1-M5	C239	1:H5	1-F2	C431	1:G6	1-R8	L210	1:H5	1-F2	R108	1:D5	1-O3	R254	1:H5	1-E2			
C132	1:D4	1-U6	C240	1:G6	1-G1	C453	1:H7	1-M1	L211	1:G5	1-G0	R112	1:E5	1-K5	R255	1:H5	1-E2			
C133	1:E4	1-O5	C241	1:F6	1-G2	C454	1:H8	1-N1	L212	1:G5	1-F1	R113	1:D5	1-M5	R256	1:H6	1-E1			
C134	1:D4	1-O6	C242	1:G4	1-B3	C455	1:H7	1-J2	#L300	1:G8	1-J0	R114	1:E5	1-L5	R257	1:J6	1-E0			
C135	1:E4	1-P5	C243	1:G5	1-E3				#L301	1:G7	1-H0	R115	1:E5	1-M5	R258	1:J6	1-F0			
C136	1:D4	1-P6	C244	1:G3	1-F7	D1	1:K10	1-V9	L302	1:G7	1-I0	R116	1:E5	1-M5	R259	1:K6	1-D0			
C137	1:D5	1-P5	C245	1:G5	1-F2	D100	1:B6	1-S2	L303	1:H9	1-L1	R117	1:E4	1-L6	R260	1:H5	1-F2			
C138	1:D4	1-P6	C246	1:H5	1-E2	D100	1:B6	1-S2	L304	1:G8	1-L0	R118	1:E5	1-M6	R261	1:K6	1-B0			
C139	1:C5	1-Q5	C247	1:F2	1-F6	D101	1:B5	1-Q3	#L305	1:H9	1-L0	R119	1:E4	1-O6	R262	1:J5	1-D1			
C140	1:C4	1-Q6	C249	1:G5	1-G0	D102	1:C5	1-P3	L306	1:J7	1-L1	R120	1:F7	1-N4	R266	1:L6	1-C1			
C141	1:C4	1-Q5	C250	1:G3	1-G7	D103	1:D5	1-N3	#L307	1:G10	1-M0	R121	1:E7	1-N4	R267	1:L6	1-D1			
C142	1:E5	1-L5	C251	1:G3	1-G6	D105	1:C4	1-T6	L308	1:G10	1-N0	R122	1:C5	1-P3	R268	1:L6	1-D1			
C145	1:E7	1-T4	C252	1:F3	1-G6	D106	1:D4	1-T6	L308A	1:H10	1-N0	R123	1:B5	1-Q3	R269	1:G5	1-G1			
C146	1:D7	1-U4	C253	1:F3	1-H6	D107	1:B5	1-S6	L309	1:G10	1-O1	R131	1:E7	1-T4	R270	1:G5	1-G0			
C147	1:E5	1-N5	C257	1:K3	1-F4	D107	1:B5	1-S5	L310	1:F10	1-O1	R132	1:D4	1-U6	R271	1:G5	1-G0			
C148	1:E7	1-O4	C300	2:D9	1-Q1	D108	1:B4	1-S5	L311	1:F9	1-O1	R133	1:D7	1-U4	R272	1:G5	1-G1			
C149	1:F5	1-L4	#C301	1:G6	1-H0	D108	1:B4	1-S5	L312	1:J8	1-L2	R135	1:E7	1-U4	R273	1:G5	1-G2			
C150	1:F7	1-O4	#C302	1:G7	1-H0	D110	1:E6	1-K3	L313	1:B7	1-S1	R138	1:C3	1-N6	R274	1:G6	1-H1			
C151	1:F8	1-Q5	#C303	2:G10	1-N0	D110	1:E6	1-K3	L314	1:E9	1-P1	R140	1:F7	1-O4	R275	1:G6	1-G0			
C152	1:F7	1-Q4	C304	1:G7	1-H0	C304	1:G7	1-E6	L316	1:F9	1-Q0	R140A	1:E7	1-O4	R276	1:G4	1-B2			
C152A	1:F7	1-P4	#C305	1:G7	1-I0	D111	1:E6	1-K2	L316A	1:F9	1-Q0	R141	1:F7	1-O4	R277	1:K6	1-D0			
C153	1:F8	1-Q4	#C306	1:G7	1-I0	D140A	1:F7	1-P4	L317	1:D9	1-Q1	R142	1:F8	1-R4	R278	1:L4	1-I4			
C153A	1:F8	1-R4	C307	1:F8	1-I1	D202	1:G4	1-C5	L318	1:D8	1-R1	R142A	1:F8	1-P4	R282	1:G2	1-E7			
C154	1:E8	1-S4	#C308	1:G8	1-K0	D202	1:G4	1-C5	L319	1:D7	1-S1	R143	1:E8	1-S4	R284	1:F4	1-J3			
C155	1:E7	1-S4	#C309	2:G8	1-K0	D203	1:K5	1-A0	L320	1:B7	1-T0	R143A	1:E8	1-Q4	R285	1:L3	1-I4			
C156	1:E8	1-S4	C310	2:H9	1-M1	D204	1:K5	1-B0	#L321	1:C10	1-R0	R144	1:F8	1-Q4	R286	1:L2	1-I3			
C157	1:E7	1-T5	C311	1:H7	1-T2	D205	1:K5	1-A0	L322	1:B9	1-U0	R144A	1:F8	1-R4	R287	1:L3	1-J4			
C158	1:F4	1-K4	C312	1:G8	1-K1	D206	1:K5	1-B0	L323	1:B10	1-U0	R145	1:F8	1-Q4	R288	1:L3	1-J4			
C174	1:B2	1-J8	#C313	1:H10	1-M0	D208	1:G5	1-F0	L324	1:B10	1-V0	R145A	1:E8	1-R4	R301	1:F7	1-I0			
C175	1:A3	1-K8	#C314	2:G9	1-L0	D209	1:G5	1-F1	L325	1:A7	1-T1	R146	1:F7	1-R5	R302	1:G7	1-I0			
C176	1:A2	1-K8	C315	1:J7	1-L1	D301	1:D8	1-S1	L326	1:A7	1-T1	R147	1:E7	1-S5	R303	1:G7	1-I1			
C179	1:B3	1-M7	C316	1:J10	1-P1	D303	1:B7	1-S0	L331	1:J7	1-T2	R148	1:E8	1-S5	R304	1:H8	1-K0			
C180	1:A3	1-L8	C317	1:J10	1-P1	D304	1:A7	1-T0	L401	1:L8	1-N9	R149	1:E7	1-T5	R305	1:F9	1-I1			
C181	1:A3	1-L7	C318	1:H10	1-M1	D306	1:B7	1-S1				R150	1:E7	1-T4	R307	1:H9	1-L1			
C182	1:C3	1-N6	C319	1:G10	1-P1	D307	1:A7	1-T0	P1	1:L3	2-D4	R151	1:B3	1-K7	R308	1:H7	1-J0			
C184	1:B4	1-M8	C320	2:G10	1-O0	D401	1:L7	1-P9	P2	1:K7	2-D2	R152	1:B3	1-K6	R309	1:G7	1-J0			
C185	1:E4	1-I6	C321	2:G10	1-O0	D401	1:L7	1-P9	P3	1:K10	2-F4	R153	1:F7	1-O4	R310	1:G8	1-K0			
C186	1:E4	1-J7	#C323	2:F10	1-P0				P5	1:B4	2-B2	R155	1:C2	1-N7	R311	1:K7	1-K1			
C187	1:E4	1-N8	C324	2:F10	1-P0	FB1	1:K10	1-U9	P6	1:K2	2-B4	R156	1:C3	1-N8	R312	1:J7	1-L1			
C188	1:F4	1-A6	C325	2:F10	1-P0	FB2	1:G8	1-L0	P7	1:K9	2-F2	R157	1:C2	1-N7	R314	1:H10	1-M0			
C189	1:B3	1-K6	C326	1:F9	1-P1	FB3	1:G8	1-L0				R158	1:C2	1-N7	R315	1:H10	1-M0			
C190	1:B3	1-K7	C327	2:D10	1-Q0	FB														



TAIT ELECTRONICS	IPN: 220-01289-04	ISS: A	ID: 2.BA	DATE: 11 Oct 2000
2K7-RF PCB LAYOUT - BOTTOM SIDE				

Scale: 1:1 ; Rotation: 90 degrees





© TAIT ELECTRONICS				
300-400MHZ RF PCB T2000-700/900				
IPN:	ISSUE:	ID:		
220-01289-04	A	2.SC. 2		
PROJECT:	DESIGNER:	FILE NAME:	FILE DATE:	NO.SHEETS:
	TS	128904a	3-Aug-00	2

04A	ECO 21 0342	TS				26-06-00
REV/ISS	AMENDMENTS	DRAWN	CHKD	D.O.	APVD	DATE